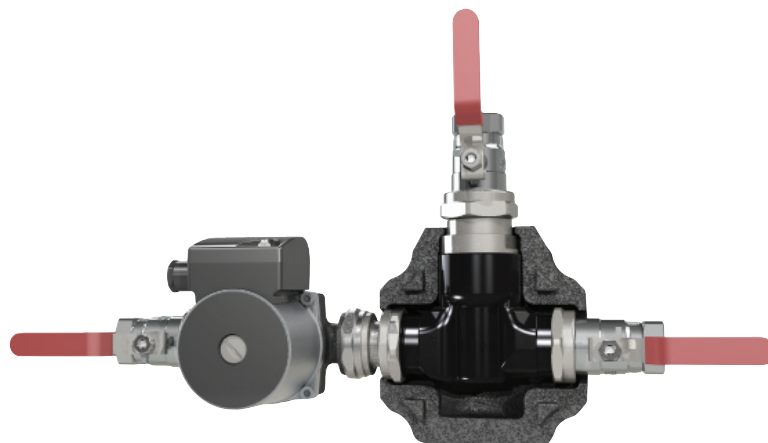


LADDOMAT® 11-200

Thermal charging and boiler protection unit



Laddomat 11-200 is easy to install and ensures perfect charging of the tank.

Thanks to efficient hot water control, the same as in Laddomat 21-60 and 21-100, Laddomat 11-200 can have a higher opening temperature at high boiler output compared to other similar products.

Laddomat 11-200 raises the return temperature to the bottom of the boiler. This prevents corrosion and tar formation, which extends the service life of the boiler significantly.

Laddomat 11-200 enables the boiler to attain working temperature in a very short time. This improves the boiler efficiency.

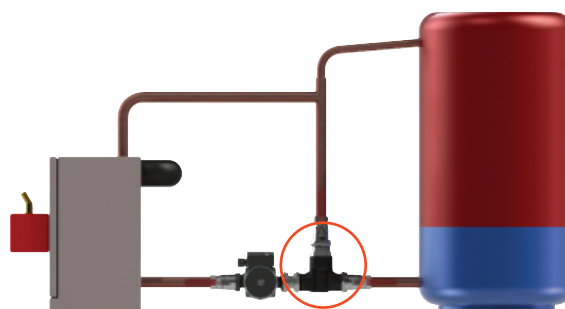
Laddomat 11-200 charges the storage tank by means of a slow flow of hot water. A thin boundary layer in the storage tank is necessary for an effective, easy-to-operate boiler system. With Laddomat 11-200 layering is optimal.

During the final part of firing, Laddomat 11-200 charges the storage tank fully, thanks to the unique thermal valve, which closes the bypass port completely.

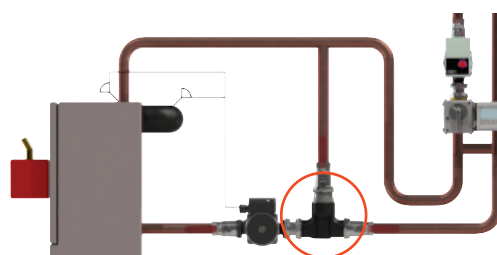
Laddomat 11-200 fits all boilers. Max capacity up to 165 kW at ΔT 22°C. Kvs value is 12.

EPP insulation is standard

Laddomat 11 is supplied with ball valves to facilitate any servicing without having to drain the system.



Laddomat 11-200 placed by the boiler or the accumulator



Installation example without accumulator.

Technical data

Thermostat cartridge: 53°, 57°, 63°, 66°, 72°, 78°, 83° or 87°C

Pump:
6 m (non EU)
6 m ErP
7,5 m ErP
10 m ErP
12 m ErP (max 165 kW)

Connection:
Cu28
R32

Max. boiler output: 165 kW

Accessories

Connection: R40 adapter kit, 3 pcs
R50 adapter kit, 3 pcs

Check valve: Built-in

